



GOING NORTH

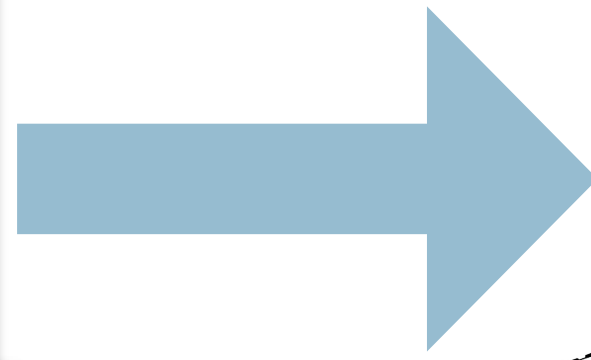
THE LUXURY TOWNHOMES



LENNAR HOMES
Resort Collection | Orlando, FL



LENNAR[®]
O R L A N D O
INTERNATIONAL HOME SALES

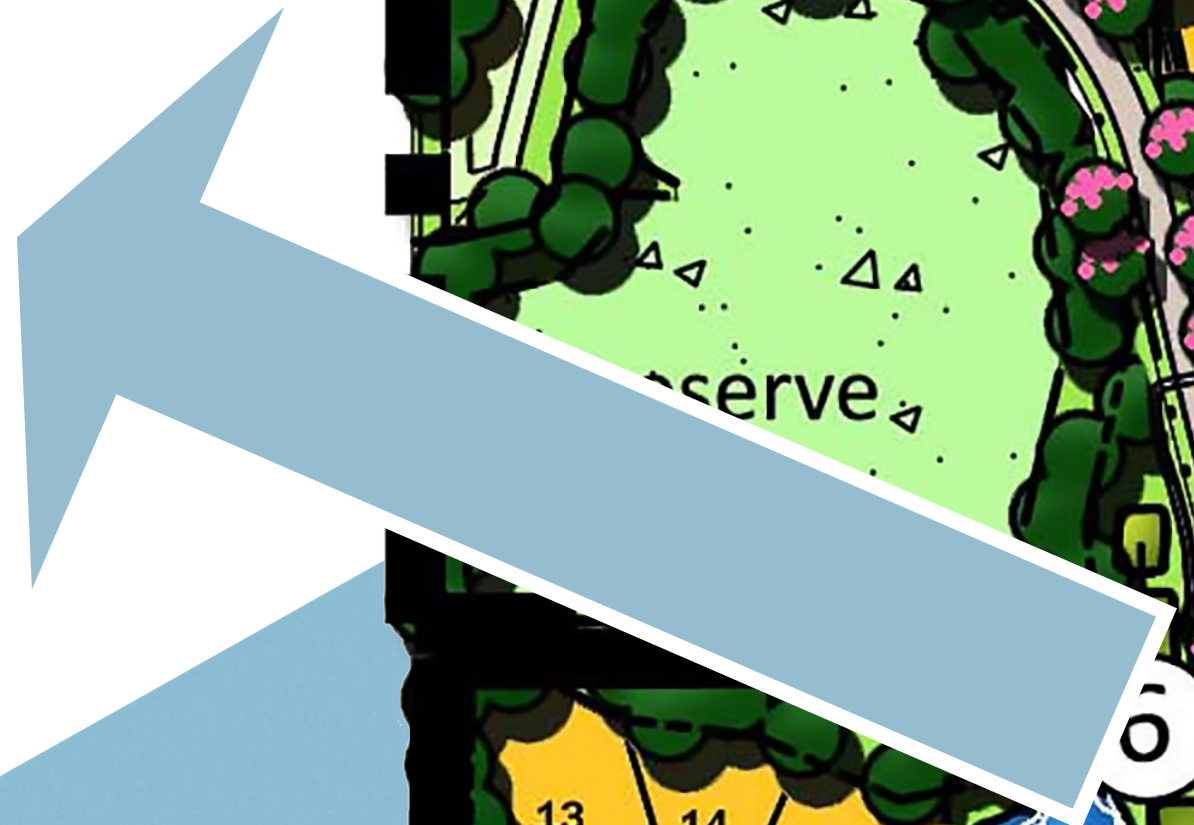


Tri-County Road



LENNAR HOMES
Resort Collection | Orlando, FL

FUTURE OASIS AMENITY



LENNAR
ORLANDO
INTERNATIONAL HOME SALES

4-Plex | Frontal Elevation



Elevations of a home may vary and we reserve the right to substitute and /or modify design and materials, in our sole opinion and without notice. Please see your actual home purchase agreement for additional information, disclosures and disclaimers related to the home and its features. Plans are artist's renderings and may contain options which are not standard on all models. Lennar reserves the right to make changes to plans and elevations without prior notice. Visit [Lennar.com](https://www.lennar.com) or see a Lennar New Home Consultant for further details and important legal disclaimers. This is not an offer in states where prior registration is required. Void where prohibited by law. Copyright (c) 2018 Lennar Corporation Lennar, the Lennar logo, Everything's Included, the Everything's Included logo, Eagle Home Mortgage and the Eagle Home Mortgage logo are U.S. registered service marks or service marks of Lennar Corporation and/or its subsidiaries. CBC 1260831 7/18

6-Plex | Frontal Elevation



Elevations of a home may vary and we reserve the right to substitute and /or modify design and materials, in our sole opinion and without notice. Please see your actual home purchase agreement for additional information, disclosures and disclaimers related to the home and its features. Plans are artist's renderings and may contain options which are not standard on all models. Lennar reserves the right to make changes to plans and elevations without prior notice. Visit [Lennar.com](https://www.lennar.com) or see a Lennar New Home Consultant for further details and important legal disclaimers. This is not an offer in states where prior registration is required. Void where prohibited by law. Copyright (c) 2018 Lennar Corporation Lennar, the Lennar logo, Everything's Included, the Everything's Included logo, Eagle Home Mortgage and the Eagle Home Mortgage logo are U.S. registered service marks or service marks of Lennar Corporation and/or its subsidiaries. CBC 1260831 7/18

8-Plex | Frontal Elevation



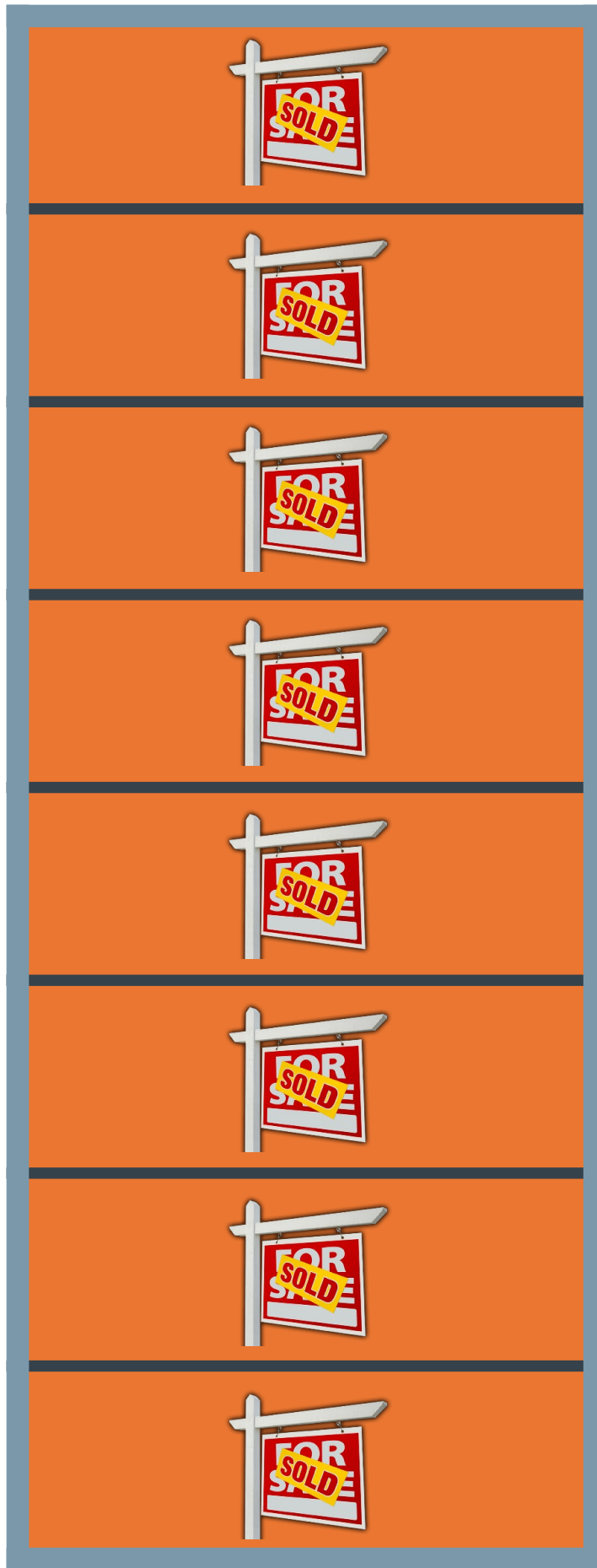
Elevations of a home may vary and we reserve the right to substitute and /or modify design and materials, in our sole opinion and without notice. Please see your actual home purchase agreement for additional information, disclosures and disclaimers related to the home and its features. Plans are artist's renderings and may contain options which are not standard on all models. Lennar reserves the right to make changes to plans and elevations without prior notice. Visit [Lennar.com](https://www.lennar.com) or see a Lennar New Home Consultant for further details and important legal disclaimers. This is not an offer in states where prior registration is required. Void where prohibited by law. Copyright (c) 2018 Lennar Corporation Lennar, the Lennar logo, Everything's Included, the Everything's Included logo, Eagle Home Mortgage and the Eagle Home Mortgage logo are U.S. registered service marks or service marks of Lennar Corporation and/or its subsidiaries. CBC 1260831 7/18



LENNAR HOMES

Resort Collection | Orlando, FL

Building 1



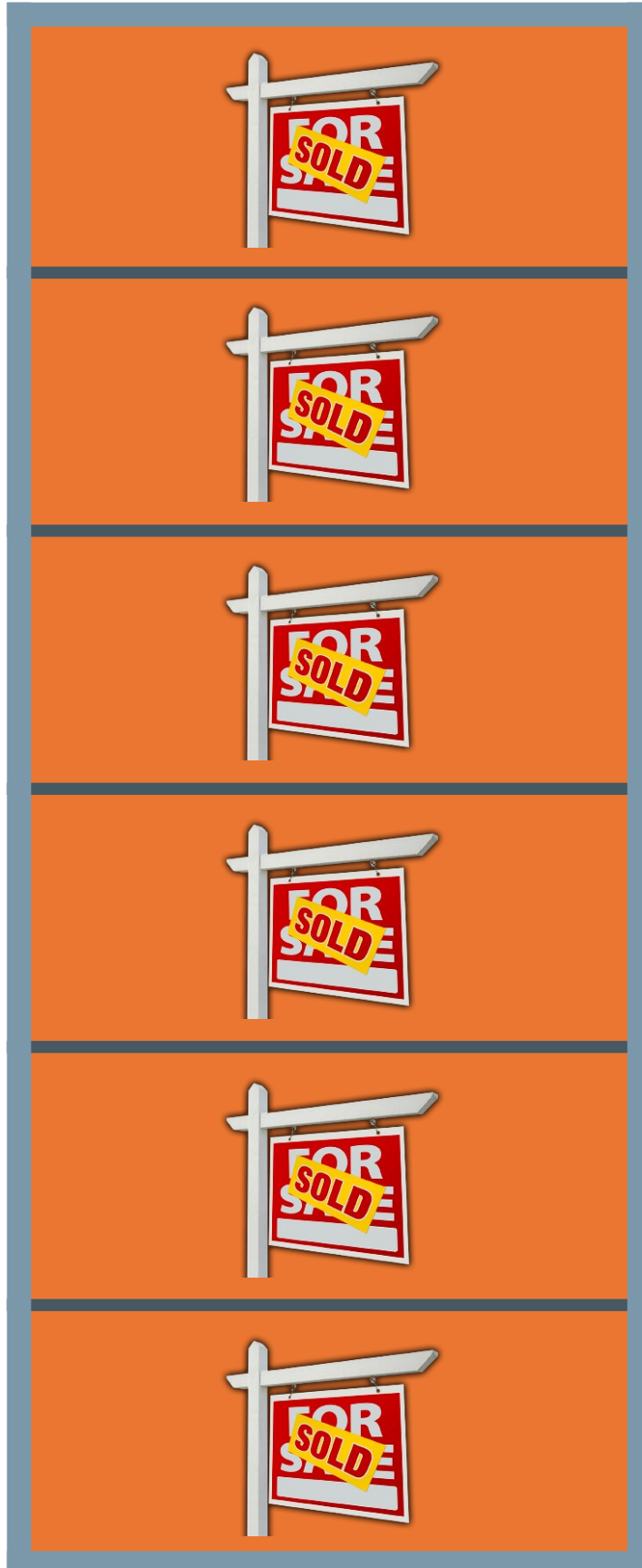
LENNAR
ORLANDO
INTERNATIONAL HOME SALES



LENNAR HOMES

Resort Collection | Orlando, FL

Building 2



LENNAR

O R L A N D O

INTERNATIONAL HOME SALES



LENNAR HOMES

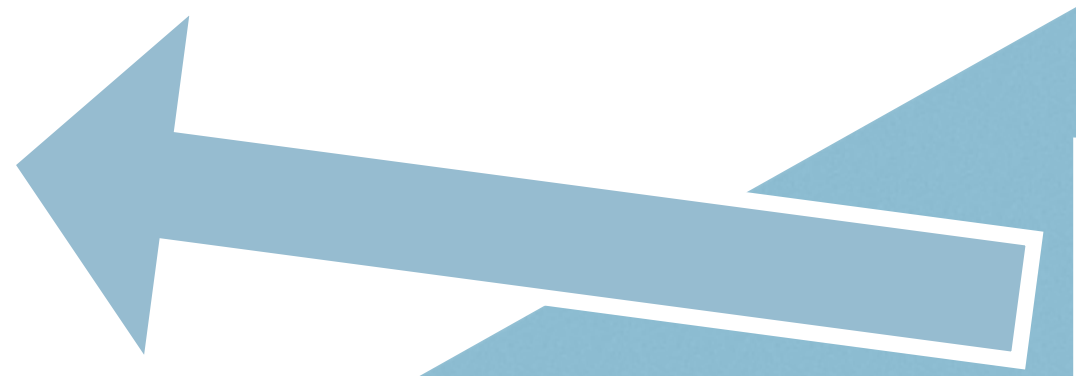
Resort Collection | Orlando, FL

Building 3

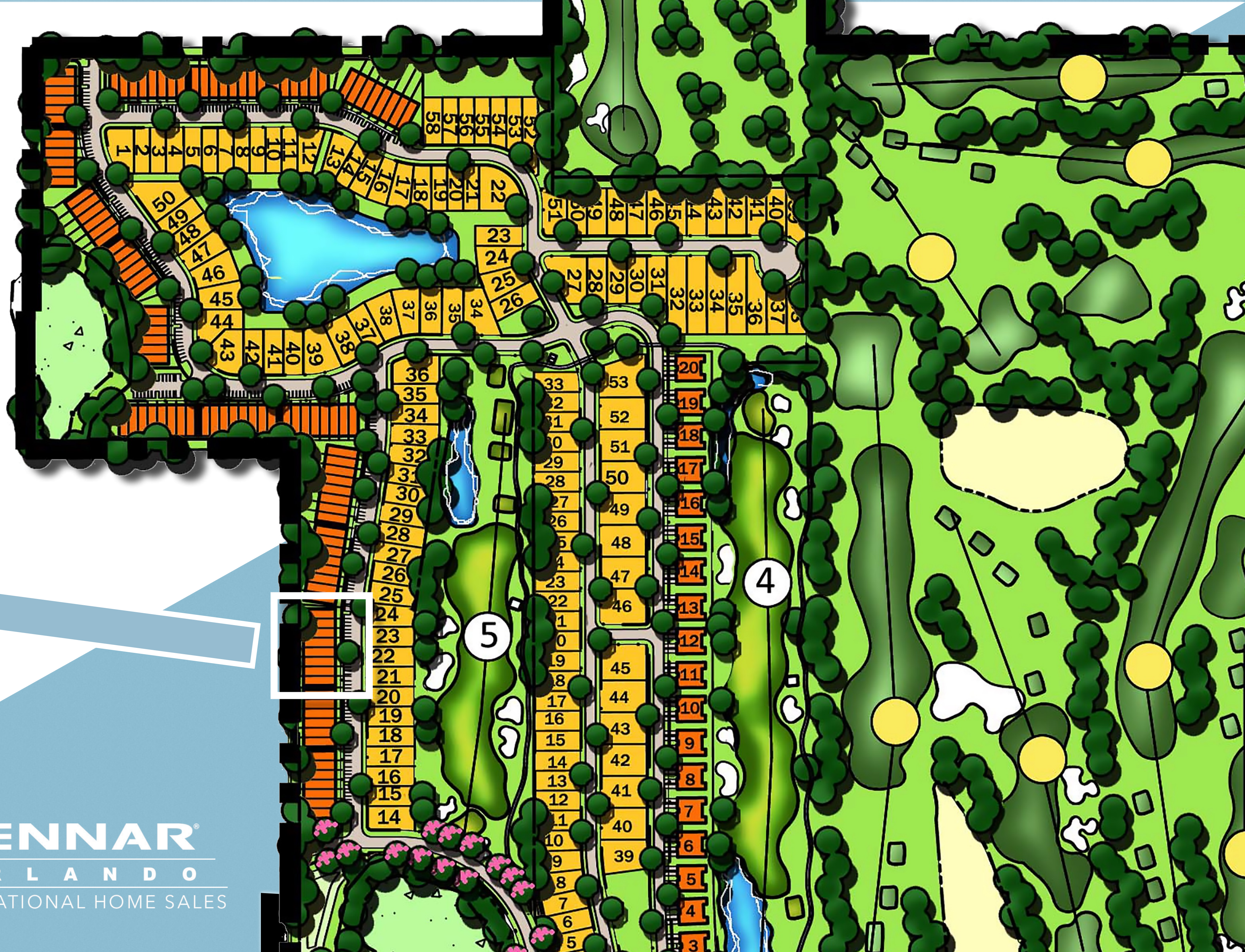
N121
Royale Palm
N122
Sabal Palm

N124
Beach Palm
N125
Beach Palm

MODEL
Sabal Palm

LENNAR
ORLANDO
INTERNATIONAL HOME SALES





LENNAR HOMES

Resort Collection | Orlando, FL

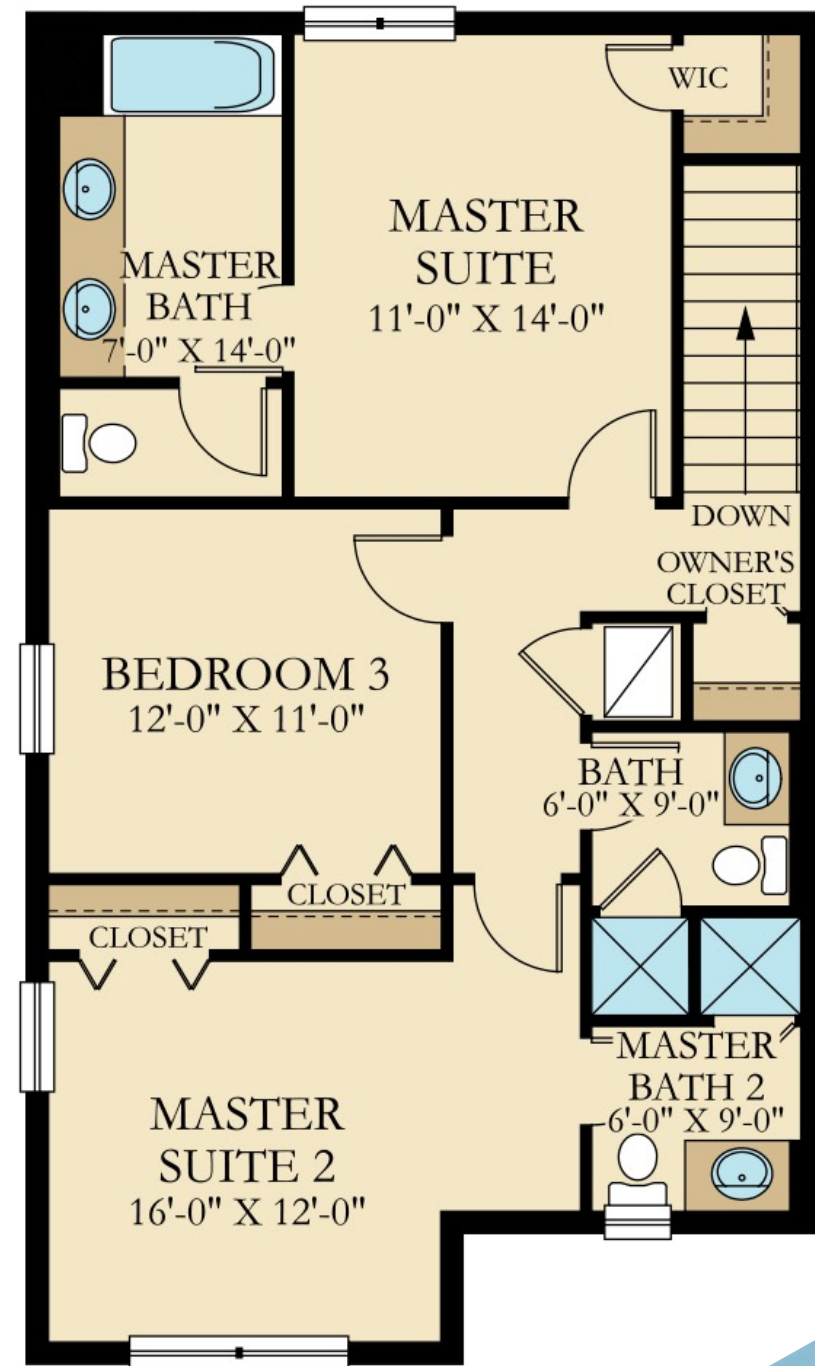
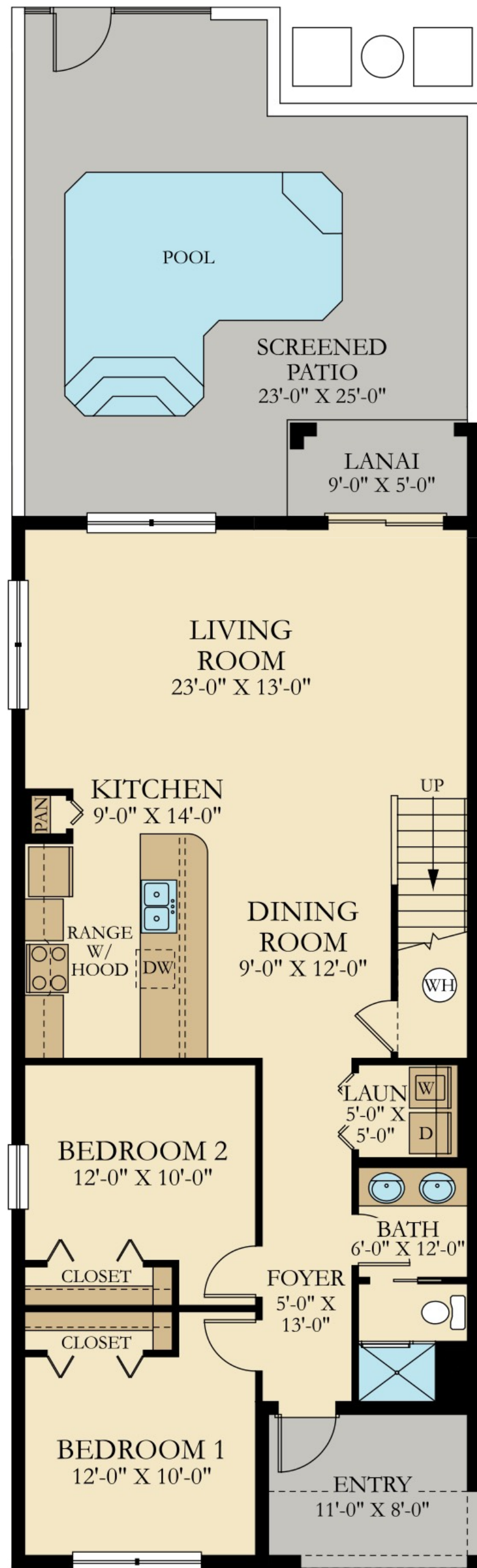
Building 4

N113 Royale Palm
N114 Sabal Palm
N115 Sabal Palm
N116 Beach Palm
N117 Beach Palm
N118 Sabal Palm
N119 Sabal Palm
N120 Royale Palm



LENNAR
ORLANDO
INTERNATIONAL HOME SALES





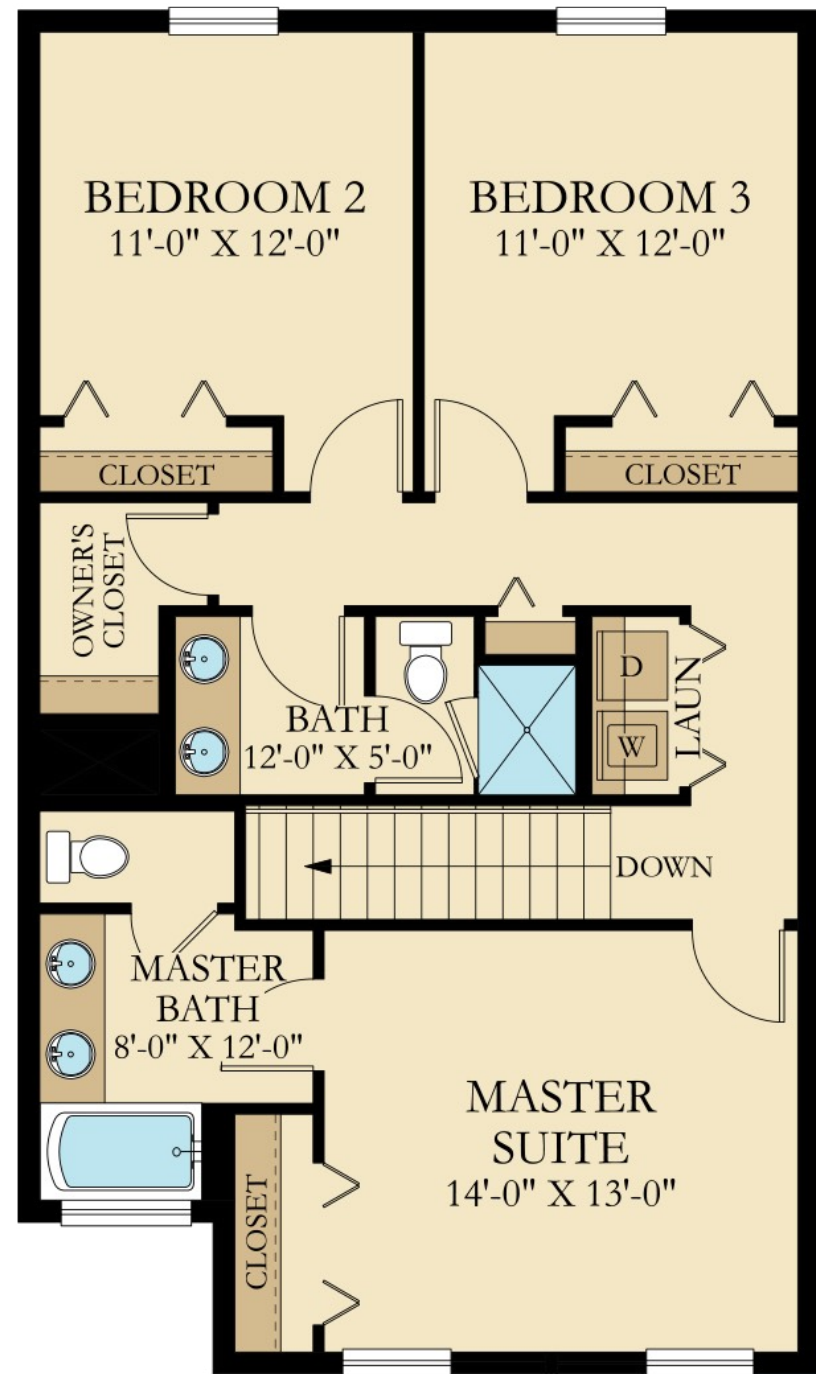
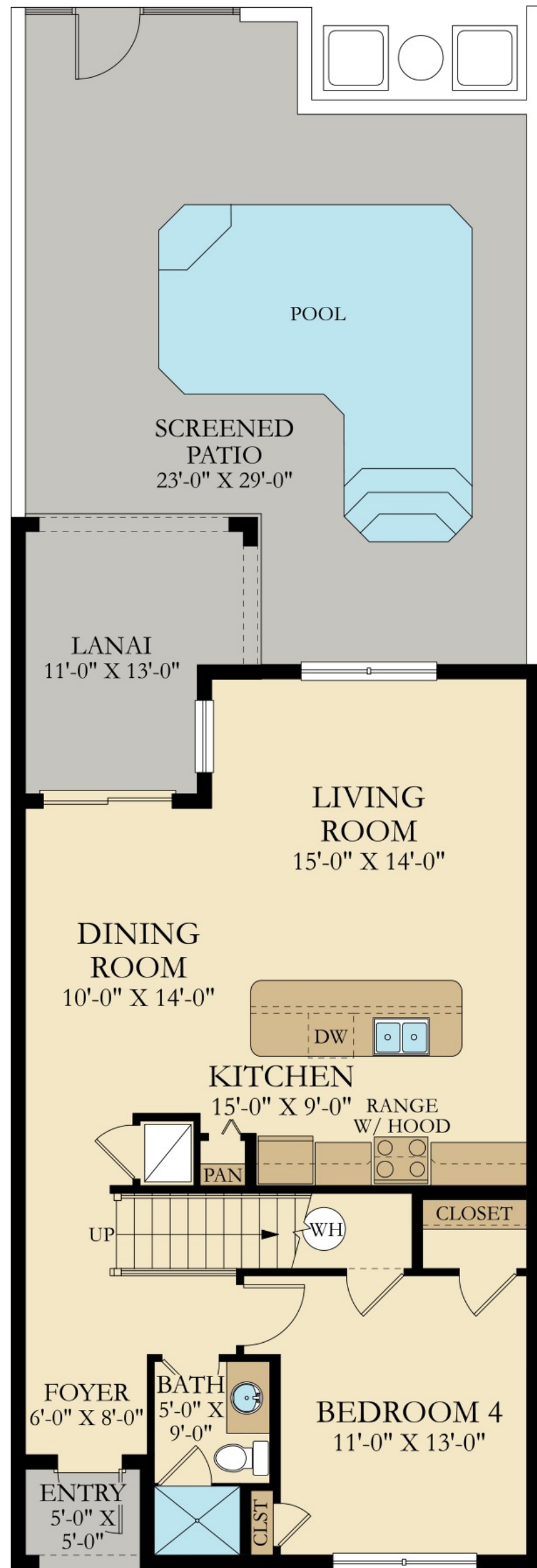
- * 5 Bedrooms
- * 4 Bathrooms
- * 2,128 sq.ft.
- * 2 floors

U.S.D.

\$341,490

Royale Palm



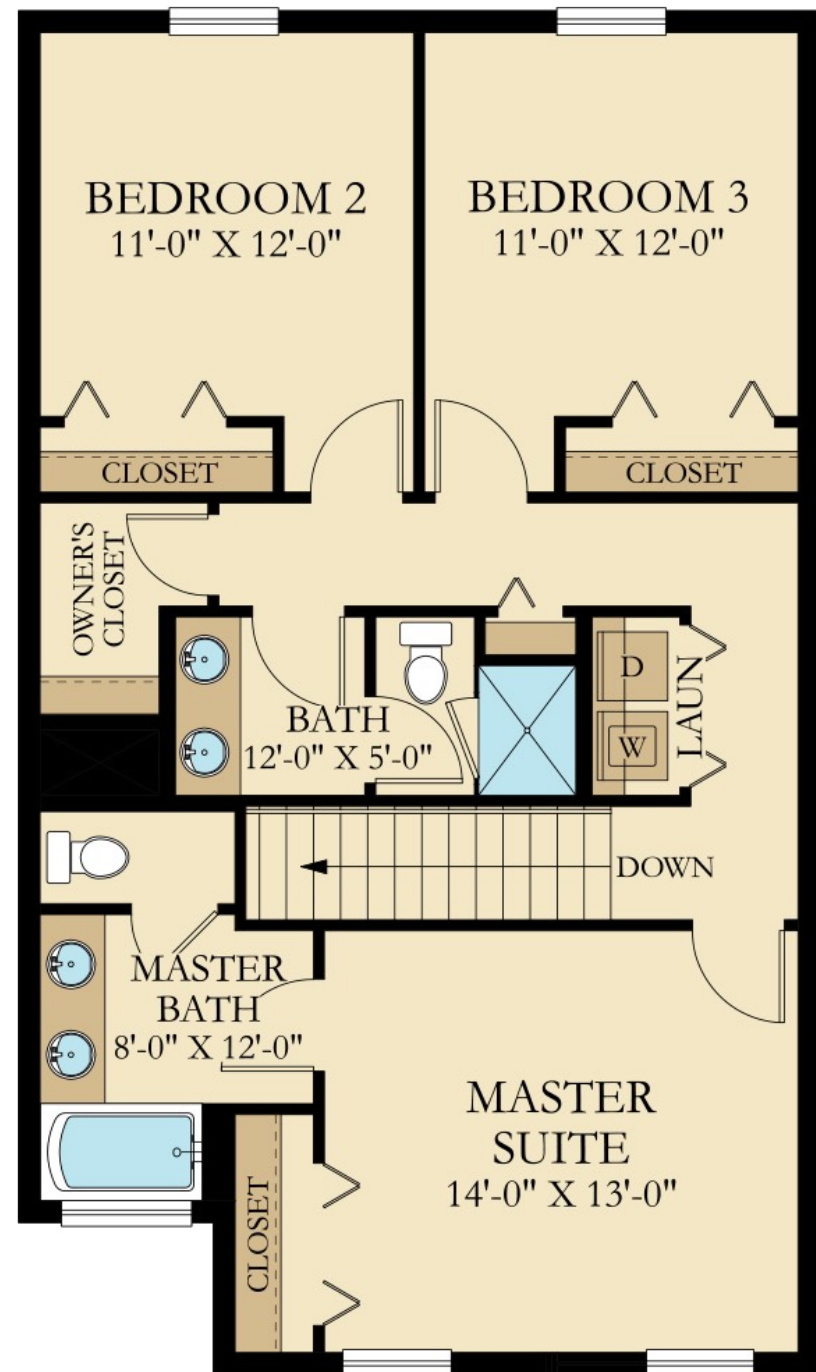
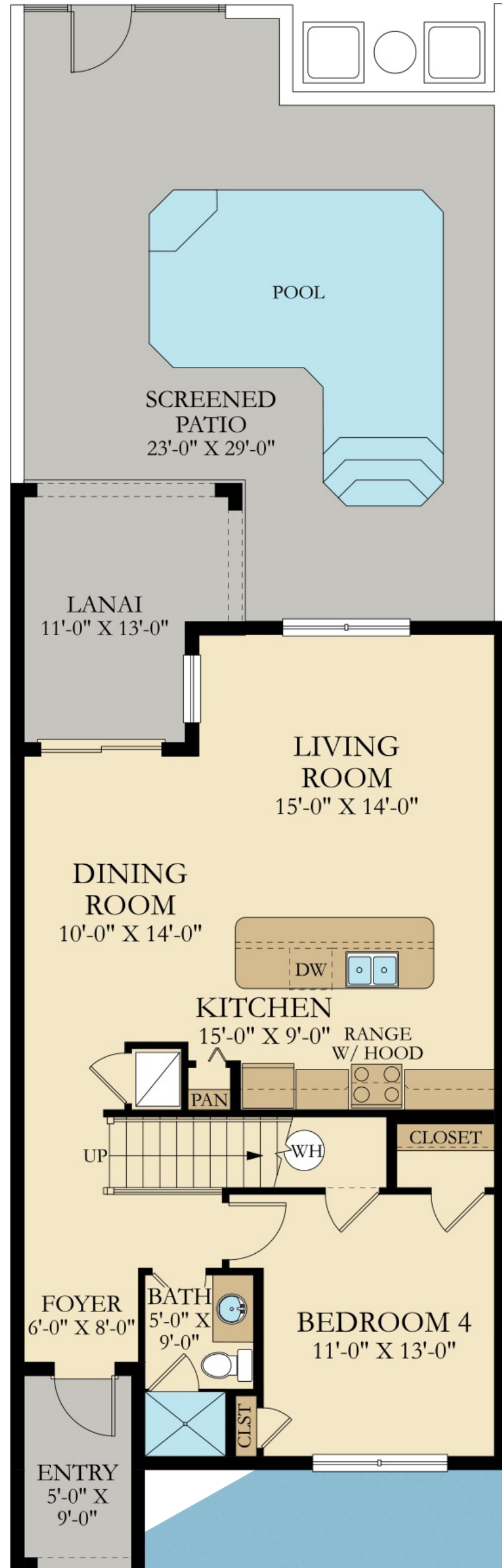


- * 4 Bedrooms
- * 3 Bathrooms
- * 2,069 sq.ft.
- * 2 floors

U.S.D.
\$326,490

Beach Palm





- * 4 Bedrooms
- * 3 Bathrooms
- * 1,914 sq.ft.
- * 2 floors

U.S.D.

\$318,490

Sabal Palm

